



Andantino 3

Music workbook

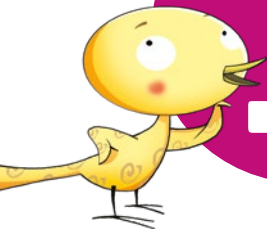
PRIMARY SCHOOL

algar
editorial



1

The treble clef



The **treble clef** is a sign placed at the beginning of the staff. It indicates that the sol note goes on the second line.



1 Sol-fa and sign «Porta oberta».

Por - ta_o - ber - ta, por - ta co - ber - ta,
 por - ta tan - cà , bo - na ma - çà!

2 Answer these questions about the song.

- In which time is it?
- How many times does it have?
- Which is the most low-pitched note?
- And the most high-pitched one?

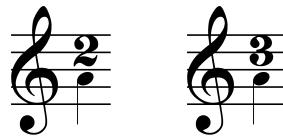


3 Rewrite and draw the treble clef.

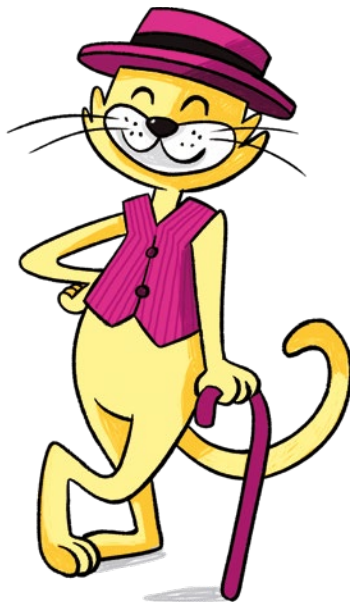
Let's remember: the 2 and 3 times

The **2 time** has two beats: the first one is strong and the second one is weak.
 The **3 time** has three beats: the first one is strong, and the other two are weak.
 The **time signature** is placed at the beginning of the song and it is written after the treble clef.

1 Write the right time signature.



2 Sing and find the time of the songs.



Lullaby and Good Night ✿



London Bridge ✿

Ja ve Cento ✿



Estaba el señor don Gato ✿

1 Sol-fa and sing «Passa passerella».

Pas-sa pas - se - re - lla, pas - sa pas - se - ró, _____
 vés-te'n, vés - te'n tu. _____ Que_ets un bon xi - cot.

Accompany the song with this rhythm:

right hand $\frac{3}{4}$ ♩ . ♩ :||
 left hand $\frac{3}{4}$ ♩ . ♩ :||

The **ostinato** indicates a part that repeats the **same rhythm** or melodic element.

2 Recognize.

1

2

3

4



The oboe

The **oboe** is a **woodwind** instrument. Sound is produced by blowing in a **double reed**. Notes are played by opening and closing the **keys**.



1 Listen to «Morning» by Edvard Grieg.

