

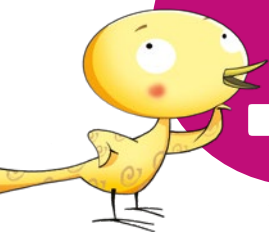


# Andantino 5

**Music workbook**

**PRIMARY SCHOOL**

**algar**  
editorial



# 1

## Rhythm and melody

Rhythm and melody are the two most important elements in music:

- Rhythm refers to the **duration** of sounds, to the **beat** and **accents**.
- Melody refers to the **pitch** of sounds.



Sol-fa and sing «Tres, sis, nou».

*Allegro*

Tres, sis, nou, 'sti-ra-li la cu - a, 'sti-ra-li la cu - a;

tres, sis, nou, 'sti-ra-li la cu - a l'es - qui - rol. Si

l'es - qui - rol no vol, 'sti-ra-li la cu - a, 'sti-ra-li la cu - a; si

l'es - qui - rol no vol, 'sti-ra-li la cu - a\_a qual - se - vol.

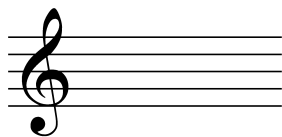


Complete with the type of time, if it starts with strong beat or anacrusis and the field.

«Els ocells han arribat» is a song written in ..... time.

It starts with...  Strong beat.  Anacrusis.

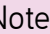









Its field is from ..... to .....



# Notes

**Notes** indicate the duration of sounds.

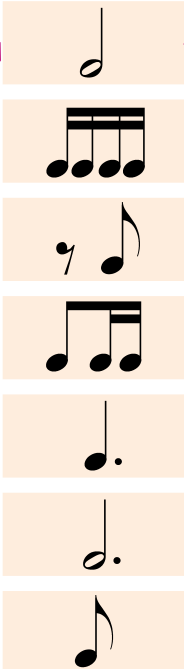
- The note that represents the **unit** is the quarter note, and the other notes get their time value from this one.
- Each note has its own **rest**.
- Notes and rests come together to form different **rhythmic combinations**.

	4	2	1	$\frac{1}{2}$	$\frac{1}{4}$
Notes					
Rests					

Keep in mind that the **dot**, added to the right side of a note or rest, increases the duration of the basic note by half of its original value.


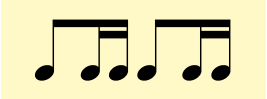




**1 Match the notes and the rhythmic combinations with their value.**

Half beat		Dotted quarter note
One beat		Half note
One beat and a half		Eighth and two sixteenth notes
Two beats		Eighth note
Three beats		Four sixteenth notes
		Dotted half note
	Eighth note rest and eighth note	



**2 Recognize the rhythms.**

<b>1</b> 	<b>2</b> 	<b>3</b> 	<b>4</b> 
---	---	--	---

a)    4

b)    4

c)    4

# Sound qualities

Remember the four sound qualities:

- **Intensity** distinguishes sounds depending whether they are stronger or weaker.
- **Duration** distinguishes sounds depending whether they are longer or shorter.
- **Pitch** distinguishes sounds depending whether they are high-pitched or low-pitched.
- **Timbre** allows us to distinguish sounds depending on the instrument that produces them.



**1 Listen to these sound couples and write the quality that distinguishes them.**

- |         |         |
|---------|---------|
| 1. .... | 4. .... |
| 2. .... | 5. .... |
| 3. .... | 6. .... |



**2 These sounds are different due to two qualities. Which qualities do you recognize?**

7. .... and .....
8. .... and .....



**3 Sol-fa and sing «Sakura» (Japan).**

Sa - ku - ra sa - ku - ra ya - yo - i no so - ra\_\_\_ wa\_\_\_  
 ka - su - mi ka ku - mo\_\_\_ ka\_\_\_

mi - wa - ta - su ka - ji - ri\_\_\_ - I - za - ya Mi ni yu\_\_\_ kan\_\_\_n  
 ni - o - i - zo i - zu - ru\_\_\_



# The music band

- It is a group of musicians formed by percussion and wind instruments (brass and wood).
- Its origin is military but today it has a notably popular character and its repertoire contains marches, paso dobles and other crowd-pleasing pieces.



The **saxophone** was invented by **Adolphe Sax** in the 19th century. It is a wind instrument with a single-reed mouthpiece similar to that of the clarinet, for this reason it belongs to the **woodwind family**. It is not part of the symphony orchestra and it is especially used in music bands and jazz groups.

## 1 Listen to the march «The Liberty Bell» by J. P. Sousa.

Which is the march time? .....

1st audition: write the form.

2nd audition: write the number of times that each one of the parts has.

Intro	A						Bridge			Bridge		
4							24					